

NHS
Newbury and District
Clinical Commissioning Group

NHS
North and West Reading
Clinical Commissioning Group

NHS
South Reading
Clinical Commissioning Group

NHS
Wokingham
Clinical Commissioning Group

NHS
Bracknell and Ascot
Clinical Commissioning Group

NHS
Windsor, Ascot and Maidenhead
Clinical Commissioning Group

NHS
Slough
Clinical Commissioning Group

Berkshire Healthcare **NHS**
NHS Foundation Trust



THE ROYAL BOROUGH OF
WINDSOR AND
MAIDENHEAD



WOKINGHAM
BOROUGH COUNCIL



Berkshire Transforming Care Partnership November 2016 Update to Wokingham Health and Wellbeing Board

Author: Sarah Rowland sarah.rowland5@nhs.net 07703767255

Keeping people well and out of hospital



Introduction

The Berkshire Transforming Care Partnership Board hold a shared vision and commitment to support the implementation of the national service model to ensure that children, young people and adults with learning disabilities, behaviour that challenges and those with mental health and autism receive services to lead meaningful lives through tailored care plans and subsequent bespoke services to meet individual needs.

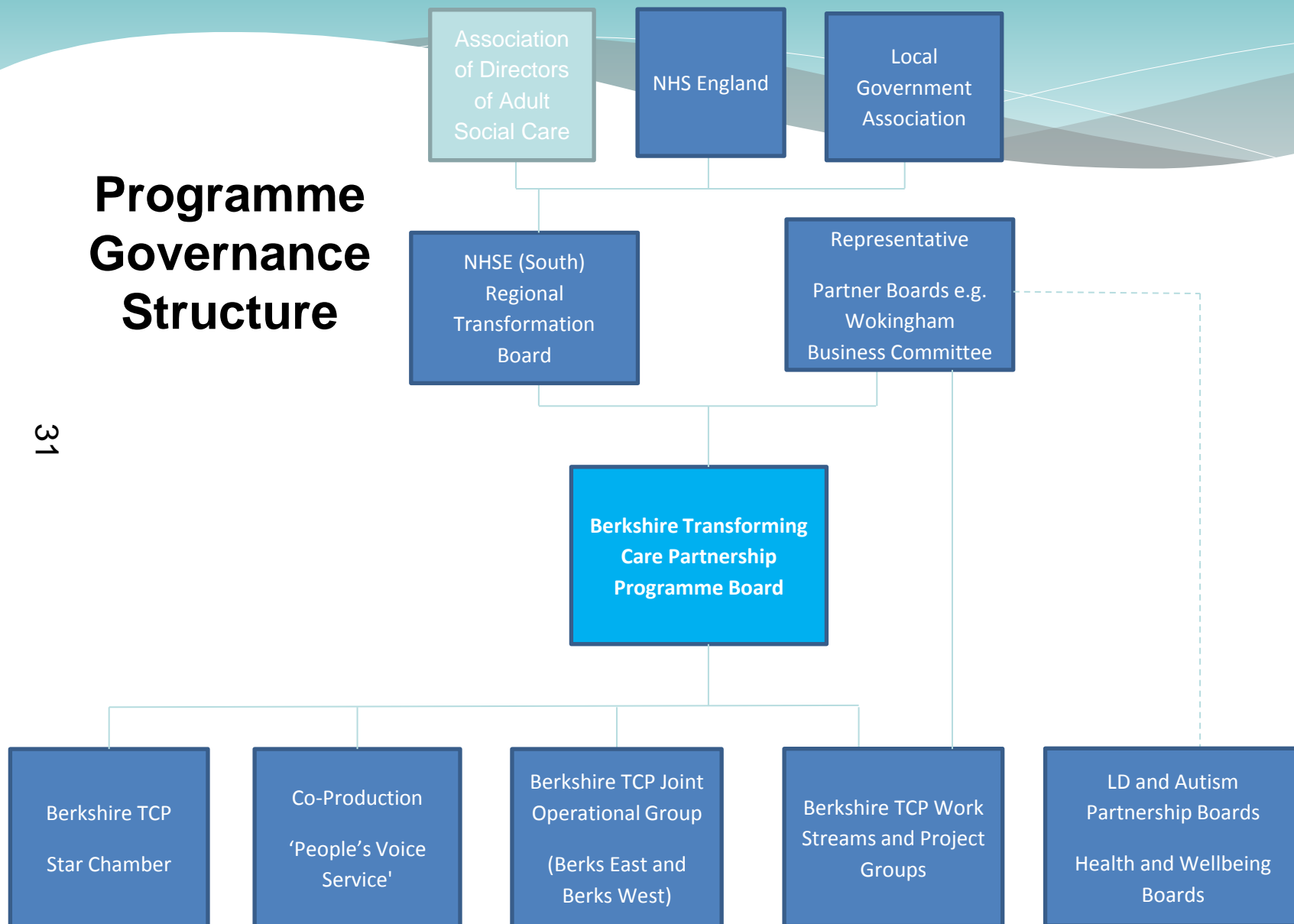
30

Berkshire Transforming Care Plan has 4 big aims:

1. Making sure less people are in hospitals by having better services in the community.
2. Making sure people do not stay in hospitals longer than they need to
3. Making sure people get good quality care and the right support in hospital and in the community
4. To avoid admissions to and support discharge from hospital, people will receive and be involved in a Care and Treatment Review (CTR)

Dedicated web page with links to the TCP plan and Easy Read version -
<http://www.wokinghamccg.nhs.uk/berkshire-transforming-care-partnership>

Programme Governance Structure



Work streams and Project Groups

Work Streams (Themes)

1. Demand and Capacity
2. Market Shaping – Housing and Care Providers
3. Inpatients
4. Intensive Support Team
5. Communications and engagement
6. Children and Young People
7. Workforce Development and Culture
8. Co-Production
9. Joint Commissioning and Integration
10. Risk Management
11. Programme management
12. High Impact Actions

Project Groups:

1. Finance and Activity
2. Housing and Accommodation
3. Autism
4. Intensive Intervention Service
5. Occupation and Employment
6. Community workforce
7. People's Voice Service (Service Users)
8. TCP Star Chamber
9. Berks East Capital 'Home' Project

Matters that would be brought to Wokingham Boroughs committee's and forums during the programme

EXAMPLES

- Update from the TCP Programme Board - note progress on specific work stream and project group deliverables
- Digest the content of TCP Briefings and take forward highlighted national guidelines/regulations that impact on local authority and clinical commissioning group strategies
- Review and amend the Information Governance Framework drafted by the TCP Joint Operational Group to support the development of a Berkshire High Risk Register. The Register will identify those at risk/require intensive support to remain in their own home, near their families and avoid admission to an assessment and treatment unit
- Following review and consideration by the Autism Project Group and members of the Joint Operational Group, endorse a TCP Berkshire wide proposal to standardise the age criteria for commissioning Autism services for Children and Young People with LD up to the age of 25 years (some localities only commission to 18 years old)
- Review and endorse a Memorandum of Understanding that enables a Berkshire wide Housing Register to be created by the Housing and Accommodation Project Group, to inform a strategic approach to managing the housing market for people with long term LD needs
- Decide to be a partner organisation that leads by example by integrating Supported Employment models for people with LD within the borough council, following work done, and tested by the Employment and Occupation Project Group
- Review and agree to adopt a Berkshire wide TCP Provider Workforce Competency and Assessment Framework as part of the selection criteria for all future procurement exercises with LD care providers. Asking the local Learning Disability Partnership Board to use the framework and work with service users and their families to conduct an assurance exercise with incumbent providers

What we said we would at the last update:

1. Refresh the Programmes Risk Register

- Corporate Risk Registers in Berks East and West CCGs reflect key programme risks
- Going forward TCP Joint Operational Group members will ensure local authority registers reflect risks/issues appropriately

2. Start recruitment drive for additional Experts by Experience to join project groups

- Job description, personal specification, advert and voluntary contract have been signed off by the TCP Programme Board
- Recruitment campaign will be published on CCG and Local Authority websites and in TCP Briefings from December
- Two carers (Parents) have been appointed as volunteers onto 3 TCP programme work streams and will support the recruitment process

3. As part of shaping the provider market and housing and accommodation market place

- Berkshire TCP is part of an NDTi Action Learning Set to identify and learn from national best practice
- The Berkshire TCP has submitted 6 Expressions of Interest for Housing and Technology schemes for grants from NHS England and the Department of Health. We will know if the bids have been successful in December.
- Wokingham submitted an expression of interest for a capital build scheme for two clients

What we said we would do:

4. Establish the Workforce work stream

- JOG has reviewed the Health Education England and Skills for Care Workforce Toolkit
- The tool is useful to help inform staff consultation exercises as systems move to implement new ways of working. However it requires significant manpower to implement in full
- JOG has used the toolkit to design a service users, families and carers tool kit to help support commissioners assess providers workforce cultures and competencies. This will be available on the web in December.

5. Establish the Autism Project Group

- The Project Group objectives have been agreed by the TCP Board
- Due to capacity issues the Group has not yet been established. It is hoped this will happen in December.

6. Monitor the safe transition of clients from Little House to appropriate sustainable community placements

- The beds at Little House will be suspended from December 2016. There are currently no Wokingham clients at Little House
- BHFT are putting in place resources to support patients and prevent avoidable admissions.
- More information on these resources will be communicated in the 4th TCP Briefing due in December
- The TCP Finance and Activity Group, (member Paul Feven) is looking to review the costing model of this service and the funding required for the new Intensive Support Team
- The Project Manager and CCG Commissioners are working with BHFT to draft the new service specification which will be reviewed by the TCP Board and Finance and Activity Group
- The TCP Board will continue to review demand for beds in the Campion Unit on a regular basis

Some of the activities planned over the next two months

- Continue with TCP Briefing to all partners and communication teams to keep them up to date
- Finance and Activity Group to do a stocktake of activity across the system; to access the cost of current and new service models
- Formally engage a care and housing provider for the RBWM Capital 'Home' Project and secure additional funding from Department of Health (DoH) for property adaptations for the two clients identified as suitable for the home
- Finalise repatriation plans for NHS England specialist commissioned clients and out of area placements, and identify clients who may be suitable for Dowry Payments
- ☞ Secure DoH Housing and Technology Grant to establish Berkshire Wide HOLD Schemes for up to 10 clients from across the county
- Establish the remit of a Forensic Pathway Project Group and Primary Care Working Group
- Align JOG work with local Substance Misuse and Personality Disorder strategies
- Continue with the recruitment campaign for more Carer and Family Experts by Experience to join the programme on Voluntary Appointment Contracts
- Go to market for Co-Production Service and Communications and Engagement Resources to support the programme over next two years
- Establish the Autism Project Group to develop joint commissioning standards around age
- Finalise the Housing and Accommodation and, Employment and Occupation Project Groups
- Adopt an Information Governance Agreement across partners to start to build a Berkshire High Risk Register of people at risk of admission to an ATU, including Children and Young People in transition